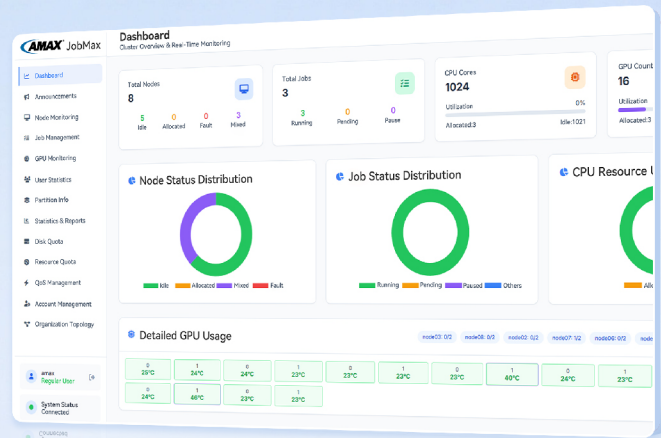




JobMax

Cluster Monitoring System



JobMax is a professional cluster resource monitoring and management platform deeply built on the Slurm workload manager. It delivers an all-in-one solution tailored for data center cluster operations, integrating real-time monitoring, node management, job control, hardware monitoring, resource statistics, and configuration management.

Designed for system administrators, cluster operators, developers, and end users, JobMax provides a visualized interface, refined control, and multi-dimensional analytics. It enables real-time visibility into cluster status, optimizes resource scheduling, resolves critical challenges such as delayed monitoring, inefficient job management, inaccurate resource allocation, and fault location difficulties, and ensures stable, efficient and reliable cluster operation.

Functional Modules

It uses a B/S (Browser/Server) architecture. All core functions and data are deployed on the backend server. Users only need a mainstream browser to access the system, with no software installation or configuration required on the client side.

• Access Method

Accessible via mainstream browsers (Chrome, Firefox, Edge, etc.). No client software or hardware required.

• Access Permission

Direct access without login. Full cluster monitoring and management information is available immediately upon page opening.

• Operating Requirements

No client software or hardware required. Only a stable network connection to the system backend server is needed.

Core Features



Cluster Overview & Real-Time Monitoring

A dashboard displays cluster nodes, jobs, CPU/GPU status and utilization. Charts show node/job distribution, with real-time job lists for quick status overview.



Comprehensive Hardware Node Control

Integrates node and GPU monitoring. Supports status filtering, query, and node state adjustment. Monitors GPU usage, temperature, and memory for refined hardware management.



Full-Lifecycle Job Management

Supports job filtering by status, partition, ID, and user. Provides batch job operations and log viewing for full-process job control from submission to completion.



Resource Usage Statistics & Analysis

Provides user/partition/history statistics with time filtering. Visualizes job trends and wait time analysis. Supports data export for O&M decision support.



Hierarchical Account Management

Slurm-based tree-structured account management. Supports view switching, account creation, and standardized user-account association for access control.