



AI SmartHub

Build, Deploy, and Manage Your Enterprise-Exclusive AI Agents



AMAX AI SmartHub is a customizable AI platform built by AMAX, empowering enterprises to develop proprietary knowledge models. By leveraging natural language processing (NLP) and machine learning technologies, SmartHub supports knowledge management, data analytics and customer service scenarios. It helps enterprises make data-driven decisions, streamline operational processes and enhance overall business efficiency.



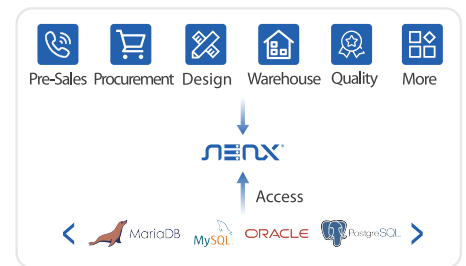
> Enterprise Q&A Assistant

AI-powered response tool that processes data in real-time, assisting departments in decision-making and innovation.



> Customer Q&A Assistant

An AI-driven customer service solution delivering real-time intelligent responses, enabling fast resolution and improved service efficiency.



> Data Research

AI analytics tool for deep data analysis, visualization of key metrics, and generation of insightful reports.

● Product Advantages



Support Multi-model Management and Deployment

Integrate multiple AI models online, supporting local deployment and meeting diverse enterprise requirements.



Support Multi-type Document Training

Import various structured/unstructured documents to build specialized knowledge bases, improving AI accuracy in specific domains.



Visual Workflow Orchestration

Offers a visual interface for workflow management, enabling business process automation and efficiency optimization.



Seamless Integration with Hardware

No-code integration with multiple hardware systems, supporting AI-driven intelligent Q&A applications.



Support for multimodal dialogue

Interact with text/video/picture/file



Support for multi-document analysis

Provide knowledge base, multi-document, cross-document analysis



Support multi-channel display

Can access other platforms



Support Team Rights Management

Separate authority management to ensure data security

Enterprise Scenario Solutions



Enterprise Intelligent Customer Service System

Build a customer service Q&A knowledge base, accurately analyze multi-format materials including documents, images and videos, and respond promptly.

- Available 24/7 with automatic and accurate replies, with a minimum response speed of 1 second.
- Capable of handling hundreds and thousands of customer inquiries simultaneously with personalized responses.



Equipment Maintenance Troubleshooting Assistant

Establish an equipment maintenance Q&A database, support historical report inquiry, provide disposal suggestions and assist engineers in decision-making.

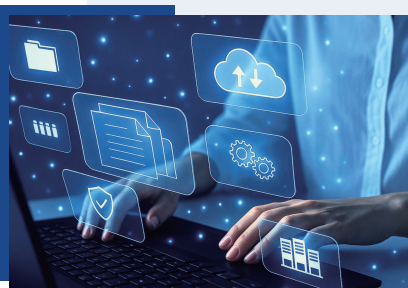
- 24-hour online service with sub-second response, quickly locating fault causes and greatly reducing equipment downtime.
- Provide equipment data, historical maintenance cases and expert experience to reduce reliance on senior technicians.
- Realize predictive maintenance, proactively warn potential risks based on equipment operation data and improve equipment stability.



Intelligent HR Solution

Deploy AI agents to realize instant inquiry of rules and policies, intelligent training and recruitment, greatly improving HR work efficiency.

- Integrate internal operation manuals, regulations and training materials, equipping HR teams with enterprise-level expert assistants.
- Intelligent inquiry supports internal AI training, helps employees learn enterprise processes independently and cut down communication costs.
- Intelligent recruitment covers resume matching and interview management, saving 80% working time, improving efficiency & accuracy and optimizing the whole recruitment process.



Intelligent Contract Review Solution

Build a contract review knowledge base to ensure compliance from the source, efficiently identify risks and put forward professional suggestions.

- Violation verification matches three major databases: national laws, industrial regulations and corporate rules, achieving full-coverage compliance management.
- Quickly extract key clauses and intelligently detect hidden risks in compliance, finance and legal affairs.
- Generate review reports with revision suggestions in one click, dramatically boosting contract review efficiency.



SMP



HPC

Contact Us

SMP Website: www.amaxsmp.com

Service Hotline: 400-860-6560

HPC Website: www.amaxchina.com

E-mail: sales@amaxchina.com